

Sweco

Transforming society together

November 18, 2021

Åsa Bergman, President and CEO

Andreas Gyllenhammar, Chief Sustainability Officer



Europe's leading architecture and engineering consultancy

#1

On the European market¹

¹ Based on reported Net sales 2020, annual reports.

17 500

Full-time employees,
with as many different
perspectives



SEK

21 bn

Net sales R12

SEK

1.7 bn

EBITA R12

14

Markets in Europe

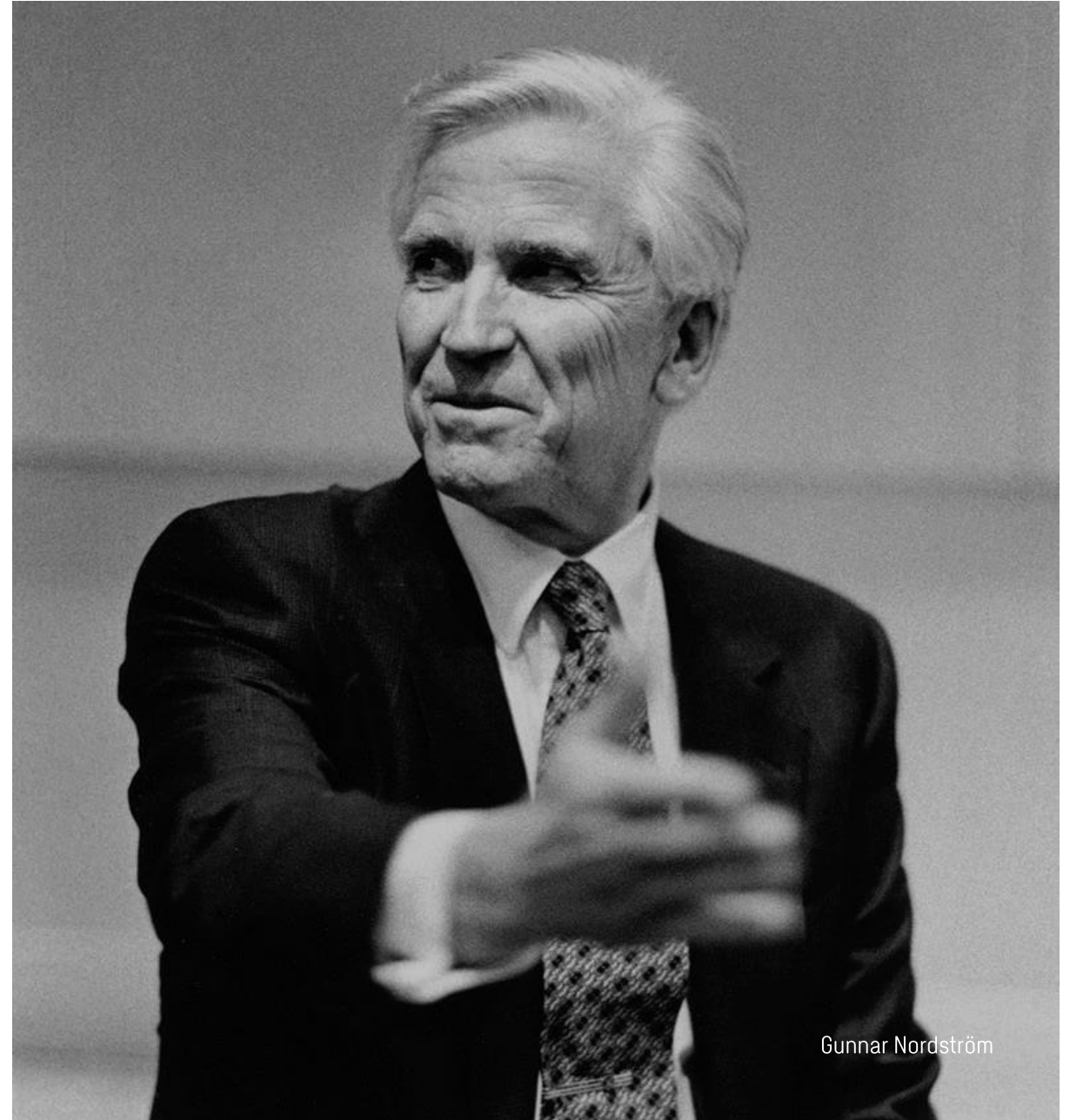
70+

Projects in more than
70 markets worldwide


Our heritage

Bringing together architects and engineers

- Founded in 1958, Sweco is based on Gunnar Nordström's vision of a combined architecture and engineering company.
- The idea is to bring different perspectives together to solve the challenges of our time.



Gunnar Nordström

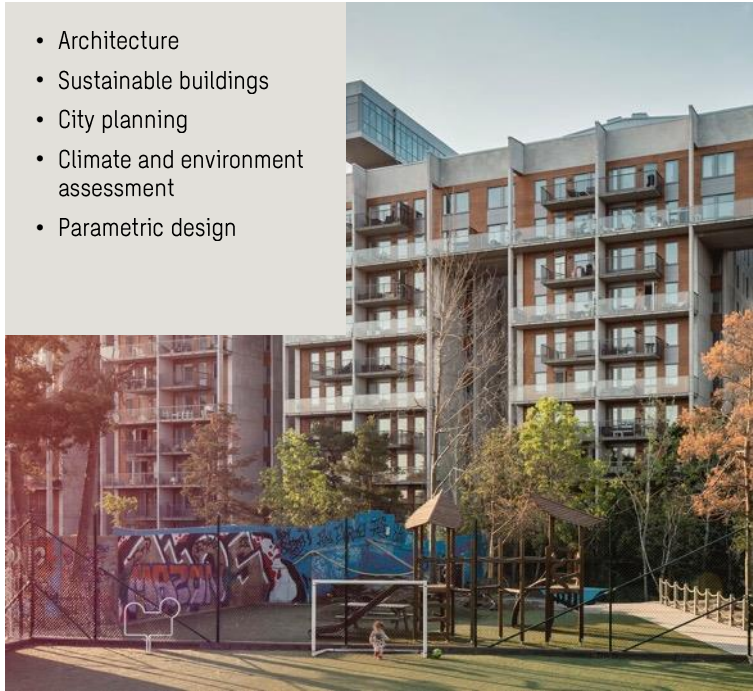


Together with our clients,
we design solutions that address
urbanisation, capture the power
of **digitalisation**, and make our
societies more **sustainable**.

What we do is more important than ever before.

Our three service segments:

- Architecture
- Sustainable buildings
- City planning
- Climate and environment assessment
- Parametric design



Buildings and urban districts

- Renewable energy
- Electrification
- Environmental impact assessment
- Efficient logistics and processes
- Water treatment and water protection



Water, energy and industry

- Railway and rail-bound traffic design
- Public transportation planning
- Cycling in cities
- Traffic and urban planning



Transport infrastructure

Sustainability is at the core of our business

Our work is Guided by the United Nation's Sustainable Development Goals.

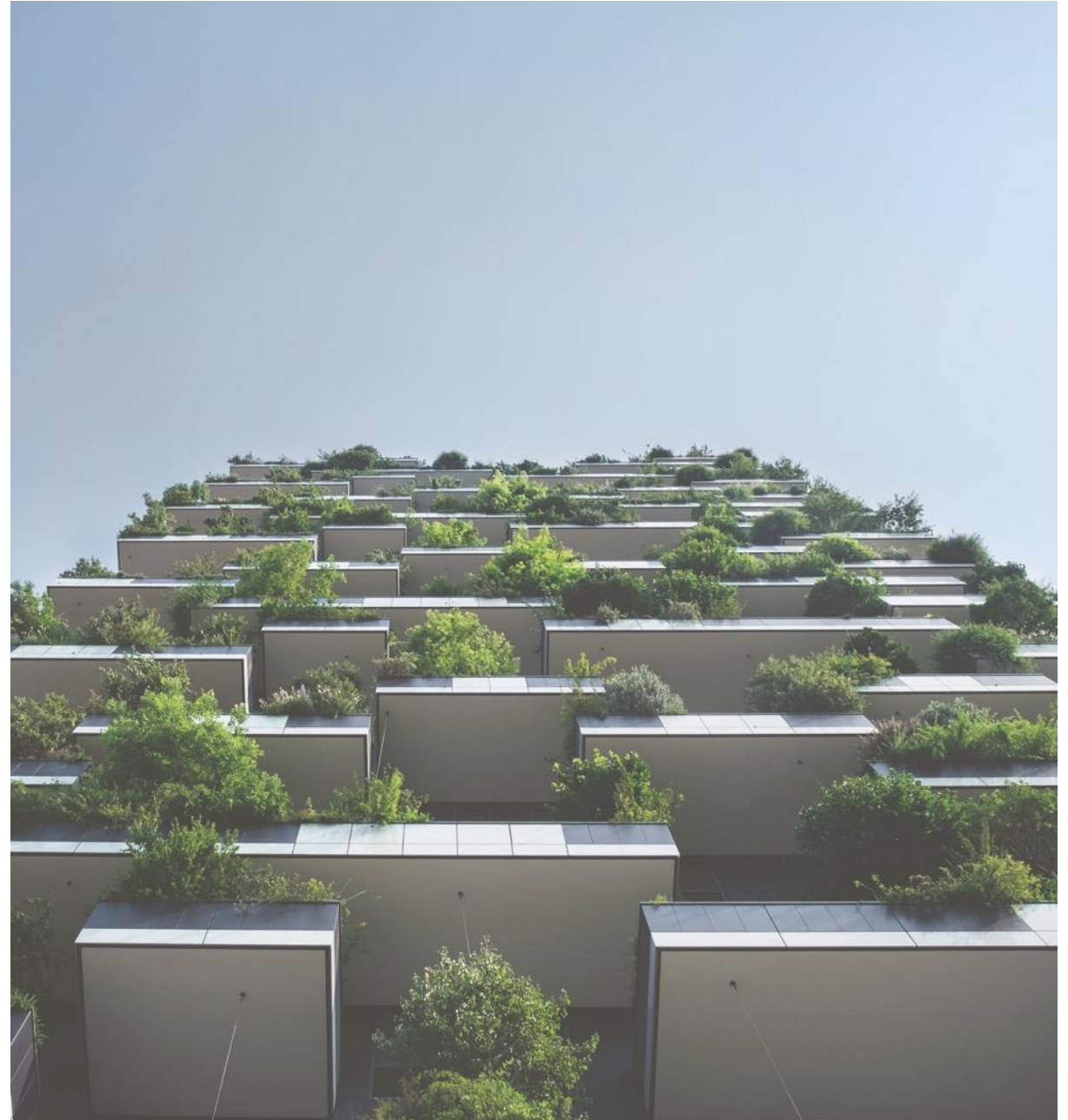
- In 2020, Sweco conducted more than 100,000 projects worldwide.
- We aim to support all development goals, with specific focus on goals 6, 7, 9, 11 and 13



Climate neutral 2040

Sweco Group will become climate neutral no later than 2040

- We plan to halve our emissions by 2030 compared to 2020.
- Our 2040 target comprises all the three scopes within the Greenhouse Gas Protocol (GHG).
- We want to act as frontrunners, meaning that we set local targets that are as ambitious or more ambitious than the national target in each country where we operate.



Transforming society together with our clients



Sweco is a trusted advisor for sustainable battery production in Sweden and Finland (Northvolt, Keliber, Terrafame)



Sweco is part of the construction of the new Crown Bridges Tramway in Finland



Sweco is an advisor for large-scale fossil-free steel production in northern Sweden (Hybrit and H2 Green Steel)

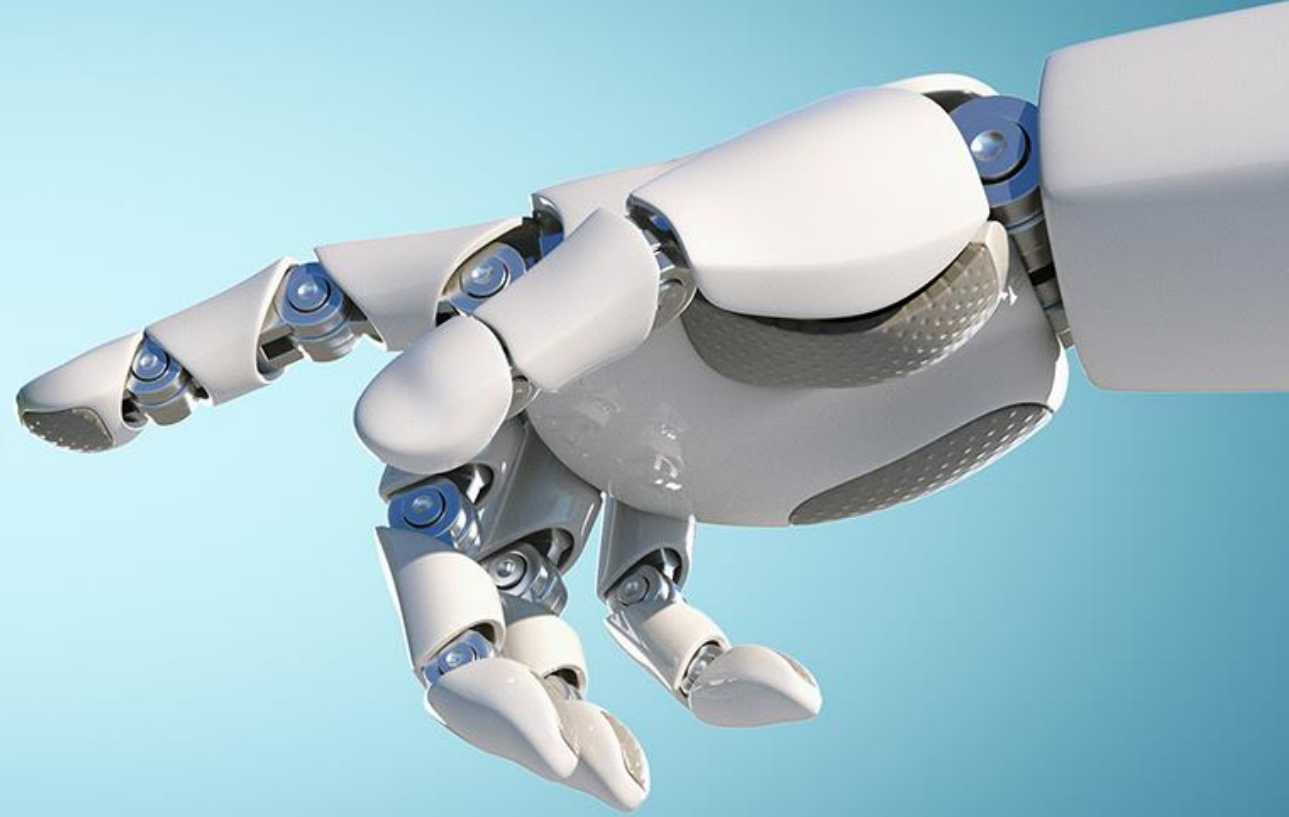


Sweco is the technical advisor to the world's first energy island, Denmark

Key takeaways from COP26



Sustainability trends



The way forward

- We see an accelerated sustainable transformation
- Continued good demand for our services
 - our 17,500 experts work close together with our clients
- We have the expertise to solve many of the challenges
- Big investments and funding in place – creates opportunities



